

# CUSTOM BUILT S T A I N L E S S



[cbstainless.com.au](http://cbstainless.com.au)

02 6962 3666

**cbs**



## ABOUT CBS

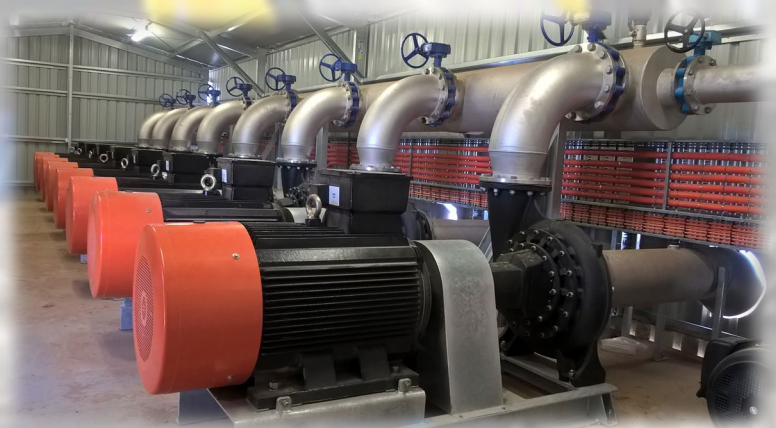
Established in 2006, Custom Built Stainless (CBS), is an Australian owned company dedicated to providing a range of quality products with an emphasis on Stainless Steel within the water transfer industry. Applications include Irrigation, Waste Water and Water Treatment.

We draw on our years of experience to design a system that is not only fit for purpose but is also economic. Our well-equipped workshop and experienced tradesman ensure that the highest quality is achieved and maintained throughout the fabrication process.

CBS stocks a large range of Stainless Steel fittings to ensure prompt service and customer timelines are upheld.

With a client base in all states our warehouse staff are well versed in packaging the finished products to preserve their quality, CBS can ship anything to our customers anywhere.

“Experience,  
Service and  
Reliability”



**CUSTOM BUILT**  
S T A I N L E S S





## Transfer Pipelines

Much of our daily business derives from the irrigation industry however we are often called upon for waste water and water treatment projects.

## In-House Drafting

Our in house drawing department uses the latest 3D Cad modelling and can produce workshop drawings direct from the customers' briefs or work from drawings supplied.

## Custom Fabrication

We fabricate to our customers' requirements from one offs to production runs as well as large project work with our welders qualified to weld to various Australian standards.



## Pump Stations

Ability to provide commercial solutions to suit most industries eg: greenhouses, on farm irrigation, processing plants, waste water, desalination.

## Mainline Fittings

CBS can supply rubber ring jointed sockets or "Bells" to suit Series 1 PVC pipe. These bells are constructed from 316 Stainless Steel and are much lighter compared to Ductile Iron fittings and are also completely customisable, virtually any combination of size and angle can be achieved in one fitting.

## Manifolds

From small intricate manifolds used in the food industry to large scale irrigation manifolds, we can custom manufacture.

## Skid Mounted Systems

For easy shipping and installation, skid mounts can be added and systems pre-assembled prior to shipping.

## Passivation Bath

Passivation of small to large components: single dip or Batching.  
Bath size 6.5m x 1.5m.



## Floating Suction Strainers

316 stainless steel with PN16 flanges.  
100mm to 800mm.  
100mm to 300mm supplied with loose flanges.  
350mm to 800mm supplied with fixed flanges.



## Plasma Cutting

Cutting capacity 1.6mm to 40mm stainless steel and 1.6mm to 50mm mild steel.  
Sheet: stainless steel and mild steel  
Pipe: stainless steel and mild steel to 600mm

## Custom Machinery

We pride ourselves on innovation and progression, so if you have a custom machinery requirement, CBS is the right choice.





## OUR VISION

Through our business divisions, our Vision is to offer world leading solutions for the Irrigation, Climate, and Water Management needs of Australian Businesses. Solutions that are recognised as Innovative, Integrated, Valued and Environmentally sensitive.

## OUR MISSION

To understand the needs of our clients and partner with them to create innovative irrigation, climate and water management solutions utilising our comprehensive range of leading suppliers, complemented by our inhouse expertise in Consulting, Technical Design, Sourcing and Logistics and Customer Service.

## OUR VALUES

Values, that are core to what we do and how we do it...

- **Teamwork and Respect**  
We will work together to achieve our vision and mission, combining open communication, support, respect and trust in each other.
- **Innovation and Ambition**  
We recognise the role innovation plays in achieving our goals – we expect a culture that encourages employees to aim for high standards.
- **Commitment and Ownership**  
We strive to be better at what we do, and therefore are continuously improving the way we work to create value. We encourage our employees to take responsibility and treat the business as their own.
- **Lifetime Partnerships**  
To build mutual respect between our suppliers, clients and partners to deliver lifelong relationships.



# cbstainless